

CONTAINER FITTING SERVICE MACHINES & RACKING

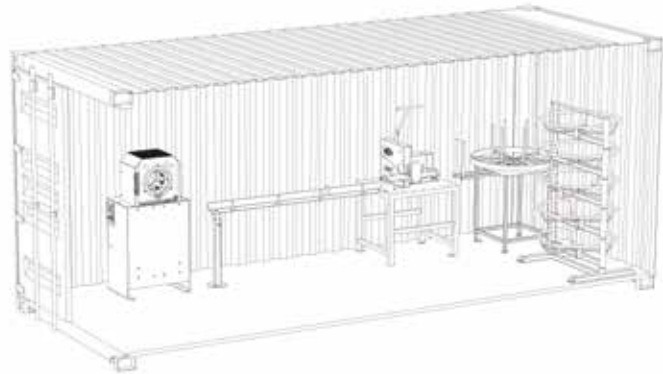
1. CHOOSE...YOUR CONTAINER

- 20 x 8ft or 15 x 8ft
- New or used
- Standard or offshore approved



2. DESIGN...YOU PERFECT WORKSHOP

- Production flow layout
- Storage selection
- Racking type and layout



3. SPECIFY...YOUR CONTAINER & MACHINES

- Container power, electrics, lighting, air supply and livery
- Crimping machine - Workshop or production
- Testing, cutting and workshop equipment



4. COMPLETE...YOUR CONTAINER - EARN MONEY!



The best return on Investment since 1972.